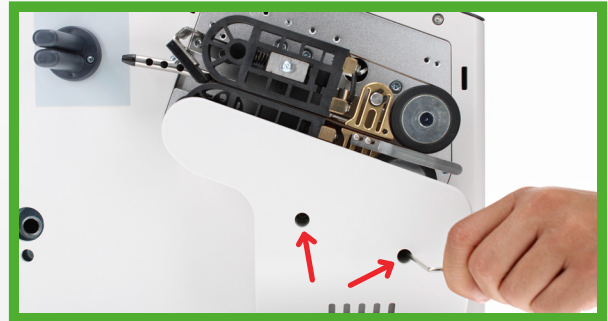


# ASFX2 Machine Belt Replacement Instructions

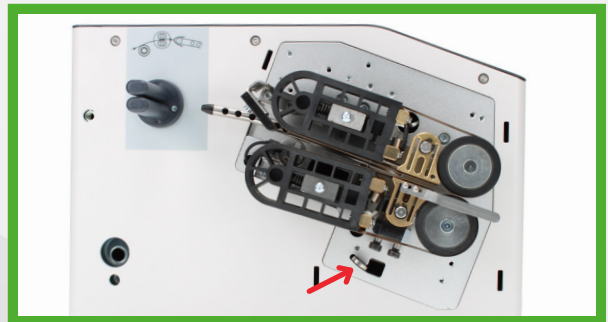
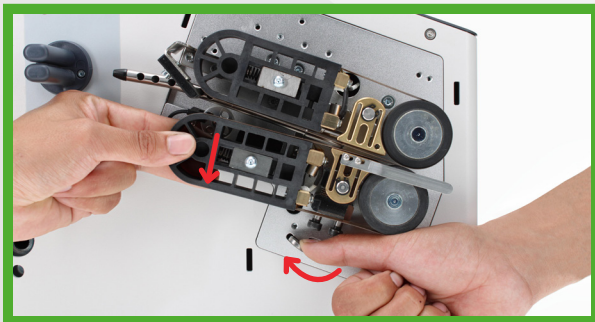


Machine should be turned off before replacing the belt. Belt sold separately.

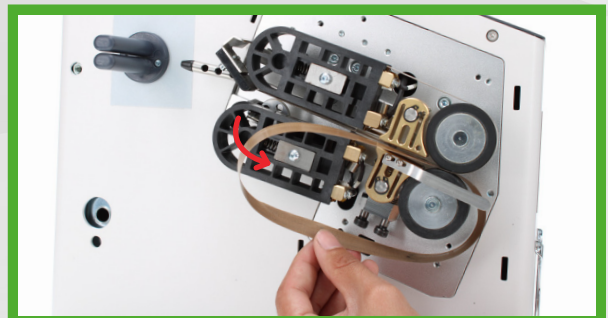
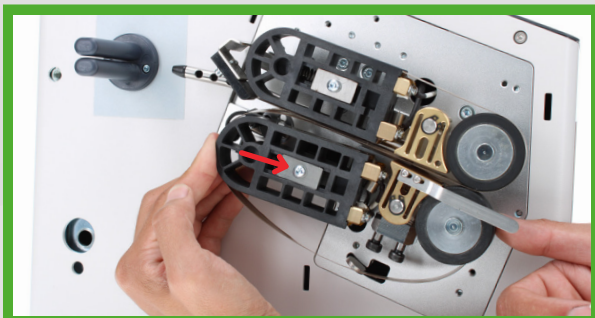
- 1. Remove the protective covers by unscrewing the two bolts on the top and bottom covers.**



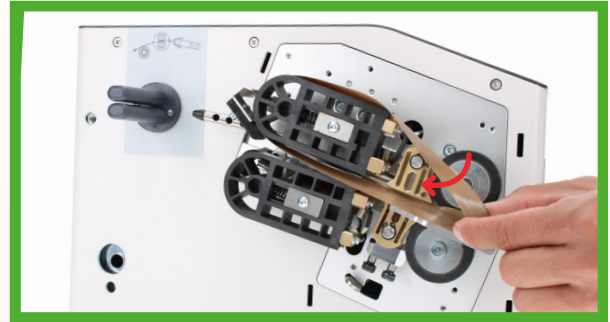
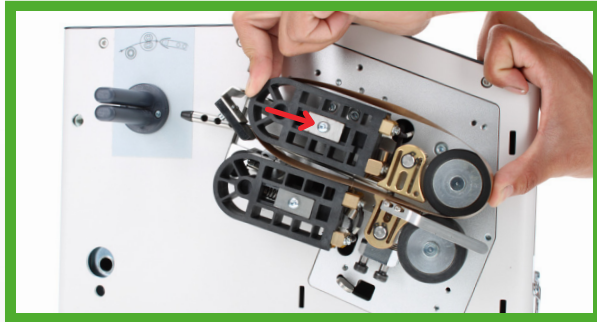
- 2. On the lower heating block, push down on the left side and simultaneously slide the lever in a downward left motion to lock the heating unit in place.**



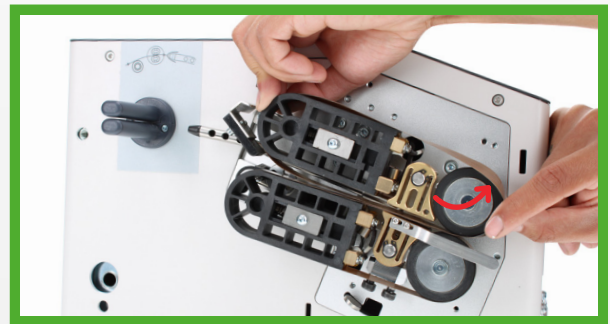
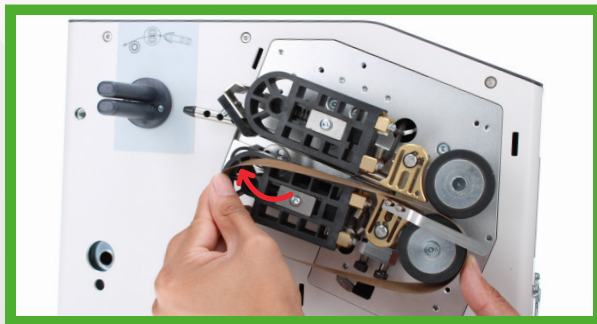
- 3. Push the lower heating block toward the right to release the tension and slide the belt away from the heating unit.**



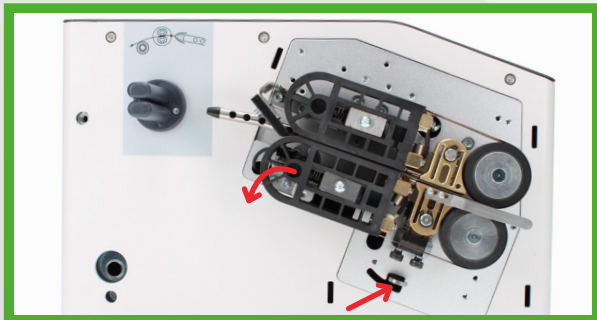
**4.** Push the upper heating block toward the right to release the tension and slide the belt away from the wheel.



**5.** Slide the new belts onto the lower and upper heating blocks.



**6.** Once the belts are replaced, push down on the lower heating block to return the lever to its original position and screw the protective covers back on.



# AirSaver®

• 800-782-9008 • 951-738-4650 • Fax: 951-273-2175  
info@airsaverpack.com | www.airsaverpack.com