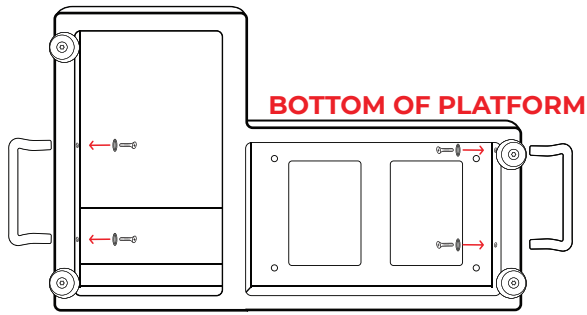
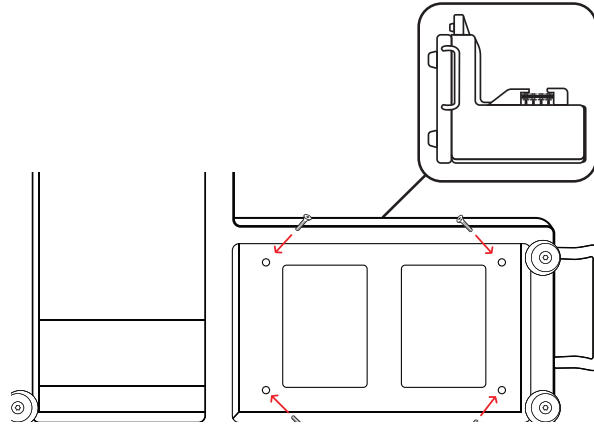


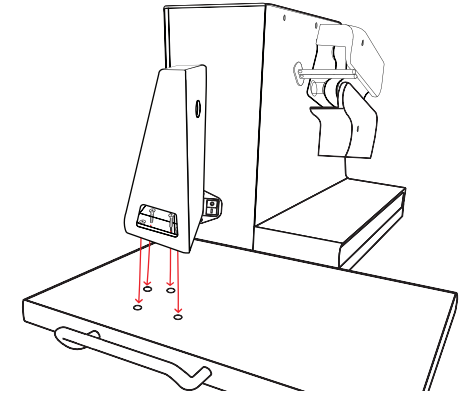
ASFX FILM ROLLER ASSEMBLY



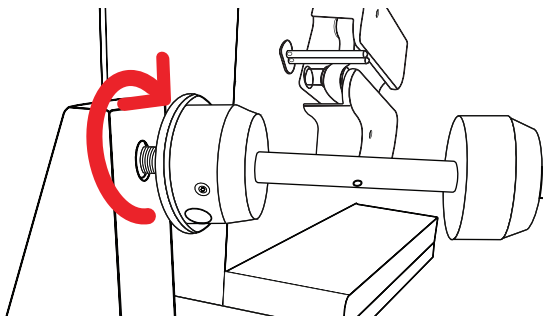
1. INSTALL THE HANDLES ON BOTH SIDES OF THE PLATFORM USING THE APPROPRIATE ALLEN WRENCH AND SCREWS WITH WASHERS.



2. PLACE THE PLATFORM AND MACHINE ON ITS SIDE LINING UP THE HOLES ON THE MACHINE TO THE SCREW HOLES ON THE PLATFORM. (REFER TO THE IMAGE ABOVE FOR REFERENCE). SECURE THE MACHINE TO THE PLATFORM USING THE SCREWS THAT DO NOT HAVE WASHERS.

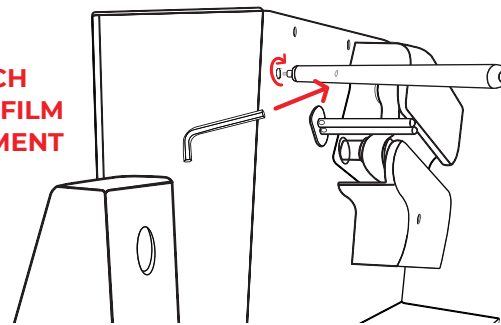


3. PLACE PLATFORM UPRIGHT. LINE UP FILM HOLDER WITH THE 4 SCREW HOLES AND SCREW IN WITH INCLUDED WASHERS.

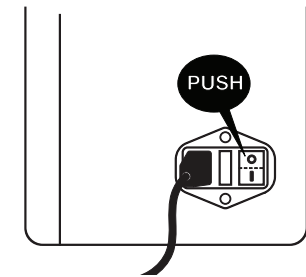


4. SCREW FILM ROLLER INTO FILM HOLDER AND HAND TIGHTEN.

ALLEN WRENCH LOCKS FILM ALIGNMENT ROD



5. INSERT THE FILM ALIGNMENT ROD (LOCATED IN THE FOAM PIECE) INTO THE MACHINE AND THEN INSERT ANY OF THE INCLUDED ALLEN WRENCHES INTO THE HOLE INDICATED ON THE IMAGE ABOVE. **USE THE ALLEN WRENCH TO HELP TURN THE ROD CLOCKWISE AND SECURE THE ALIGNMENT ROD TO THE MACHINE.** REMOVE ALLEN WRENCH ONCE SECURED.



6. PLUG IN THE POWER CABLE AND TURN THE MACHINE ON USING THE POWER SWITCH LOCATED ON THE BACK.